

D **Effektgewebe 2**

OPAL
Art. 1821-
Art. 1820-
GRANAT
Art. 1822-
Art. 1823-

F **Toiles déco 2**

OPAL
Réf. 1821-
Réf. 1820-
GRANAT
Réf. 1822-
Réf. 1823-

E **Special Effect Materials 2**

OPAL
Art. 1821-
Art. 1820-
GRANAT
Art. 1822-
Art. 1823-

Bitte beachten:
In der Darstellung der Muster als PDF-Datei kann es technisch bedingt zu Farbabweichungen kommen.

Attention!
Photos non contractuelles.

Please note:
Photos of samples shown in pdf-file may vary slightly in colour due to technical reasons.

**Effektgewebe
OPAL**

100 % Polyester.
Permanent schwer entflammbar.
Stüchlängen ca. 30 lfm.

**Toile déco
OPAL**

100 % polyester.
Longueur des pièces env. 30 ml.

**Special Effect Material
OPAL**

100 % Polyester.
Inherently flame retardant.
Piece lengths approx. 32.8 yds.

Art. / Réf.	Farben	Coloris	Colours	B1	M1	EN	EN* NFPA	↔	cm	ft/in	g/m ²	oz/yd ²
1821 5111	champagne	champagne	champagne	•	•	•			150	59"	80	2.36
1821 7311	hellgelb	jaune clair	light yellow	•	•	•			150	59"	80	2.36
1821 4021	marzipan	massepain	marzipan	•	•	•			150	59"	80	2.36
1821 7511	orange	orange	orange	•	•	•			150	59"	80	2.36
1821 5471	ockerbraun	brun terre de Sienne	ochre brown	•	•	•			150	59"	80	2.36
1821 4621	erdbeerrot	rouge fraise	strawberry red	•	•	•			150	59"	80	2.36
1821 4661	karminrot	rouge carmin	carmine red	•	•	•			150	59"	80	2.36
1821 4761	rubinrot	rouge rubis	ruby red	•	•	•			150	59"	80	2.36
1821 4441	pink	fuchsia	magenta	•	•	•			150	59"	80	2.36
1821 2291	lila	lilas	lilac	•	•	•			150	59"	80	2.36
1821 2351	purpur	violet pourpre	purple red	•	•	•			150	59"	80	2.36
1821 1441	mittelblau	bleu moyen	medium blue	•	•	•			150	59"	80	2.36
1821 1661	dunkelblau	bleu foncé	dark blue	•	•	•			150	59"	80	2.36
1821 1841	marineblau	bleu marine	navy blue	•	•	•			150	59"	80	2.36
1821 3031	signalweiß	blanc sécurité	signal white	•	•	•			150	59"	80	2.36
1821 5011	perlweiß	blanc perlé	oyster white	•	•	•			150	59"	80	2.36
1821 3111	platingrau	gris platine	platinum grey	•	•	•			150	59"	80	2.36
1821 3191	steingrau	gris pierre	stone grey	•	•	•			150	59"	80	2.36
1821 6061	lindgrün	vert d'eau	pastel green	•	•	•			150	59"	80	2.36
1821 6501	grasgrün	vert herbe	grass green	•	•	•			150	59"	80	2.36
1821 6661	minzgrün	vert menthe	mint green	•	•	•			150	59"	80	2.36
1821 6841	tannengrün	vert sapin	pine	•	•	•			150	59"	80	2.36
1821 5691	braun	brun	brown	•	•	•			150	59"	80	2.36
1821 3331	eisengrau	gris fer	iron grey	•	•	•			150	59"	80	2.36
1821 3471	tiefschwarz	noir foncé	jet black	•	•	•			150	59"	80	2.36
1820 5111	champagne	champagne	champagne	•	•	•			310	122"	80	2.36
1820 7311	hellgelb	jaune clair	light yellow	•	•	•			310	122"	80	2.36
1820 4021	marzipan	massepain	marzipan	•	•	•			310	122"	80	2.36
1820 7511	orange	orange	orange	•	•	•			310	122"	80	2.36
1820 5471	ockerbraun	brun terre de Sienne	ochre brown	•	•	•			310	122"	80	2.36
1820 4621	erdbeerrot	rouge fraise	strawberry red	•	•	•			310	122"	80	2.36
1820 4661	karminrot	rouge carmin	carmine red	•	•	•			310	122"	80	2.36
1820 4761	rubinrot	rouge rubis	ruby red	•	•	•			310	122"	80	2.36
1820 4441	pink	fuchsia	magenta	•	•	•			310	122"	80	2.36
1820 2291	lila	lilas	lilac	•	•	•			310	122"	80	2.36
1820 2351	purpur	violet pourpre	purple red	•	•	•			310	122"	80	2.36
1820 1441	mittelblau	bleu moyen	medium blue	•	•	•			310	122"	80	2.36
1820 1661	dunkelblau	bleu foncé	dark blue	•	•	•			310	122"	80	2.36
1820 1841	marineblau	bleu marine	navy blue	•	•	•			310	122"	80	2.36
1820 3031	signalweiß	blanc sécurité	signal white	•	•	•			310	122"	80	2.36
1820 5011	perlweiß	blanc perlé	oyster white	•	•	•			310	122"	80	2.36
1820 3111	platingrau	gris platine	platinum grey	•	•	•			310	122"	80	2.36
1820 3191	steingrau	gris pierre	stone grey	•	•	•			310	122"	80	2.36
1820 6061	lindgrün	vert d'eau	pastel green	•	•	•			310	122"	80	2.36
1820 6501	grasgrün	vert herbe	grass green	•	•	•			310	122"	80	2.36
1820 6661	minzgrün	vert menthe	mint green	•	•	•			310	122"	80	2.36
1820 6841	tannengrün	vert sapin	pine	•	•	•			310	122"	80	2.36
1820 5691	braun	brun	brown	•	•	•			310	122"	80	2.36
1820 3331	eisengrau	gris fer	iron grey	•	•	•			310	122"	80	2.36
1820 3471	tiefschwarz	noir foncé	jet black	•	•	•			310	122"	80	2.36



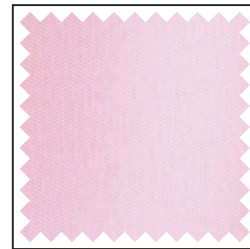
Griffmuster / Echantillon / Sample



-5111



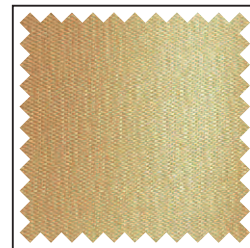
-7311



-4021



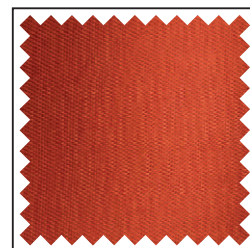
-7511



-5471



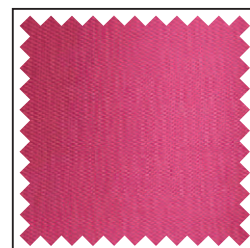
-4621



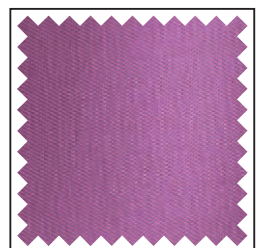
-4661



-4761



-4441



-2291

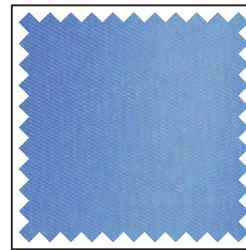
Der Inhalt dieser Farbkarte entspricht dem Stand zum Zeitpunkt des Drucks.
Aktuellste Angaben entnehmen Sie bitte den entsprechenden Datenblättern auf unserer Internetseite.

Les informations contenues dans ce nuancier sont valables à la date de l'impression.
Pour les mises à jour, consulter notre site internet.

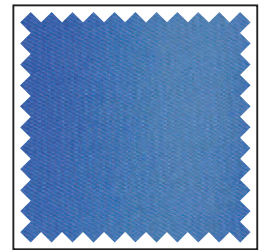
All information and colour specifications are valid at the time of printing.
For latest product details please see the respective online data sheet.



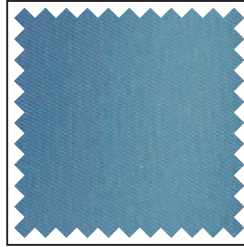
-2351



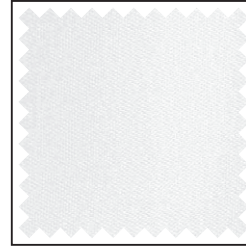
-1441



-1661



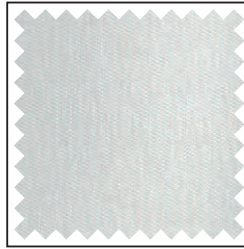
-1841



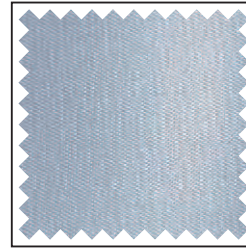
-3031



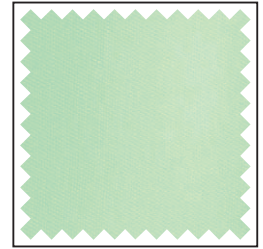
-5011



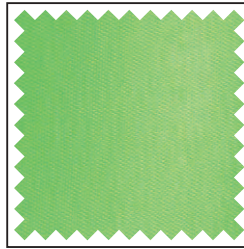
-3111



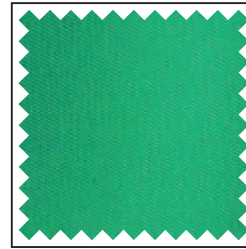
-3191



-6061



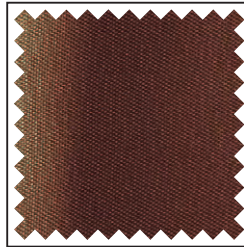
-6501



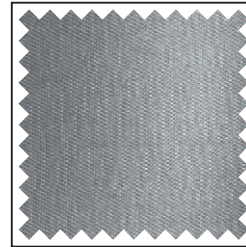
-6661



-6841



-5691



-3331



-3471

Erläuterungen der Brandschutznormen B1, M1, BS, EN, EN* und NFPA unter www.gerriets.com.

Auf Wunsch:
Professionell konfektionierte
Vorhänge aus unseren Ateliers.

Informations concernant les normes de feu B1, M1, BS, EN, EN* et NFPA, consulter notre site www.gerriets.com.

Sur demande :
Confection sur mesure dans nos
ateliers de couture.

For explanation of flame retardant standards B1, M1, BS, EN, EN* and NFPA, please go to www.gerriets.com.

On request:
Professional quality curtains
manufactured in our workshops.

B1 = DIN 4102 B1
M1 = M1
BS = BS 5867
EN = DIN EN 13501-1
EN* = DIN EN 13773
NFPA = NFPA 701

**Effektgewebe
GRANAT**

75 % Polyester, 25 % Polyamid.
Stüklängen ca. 30 lfm.

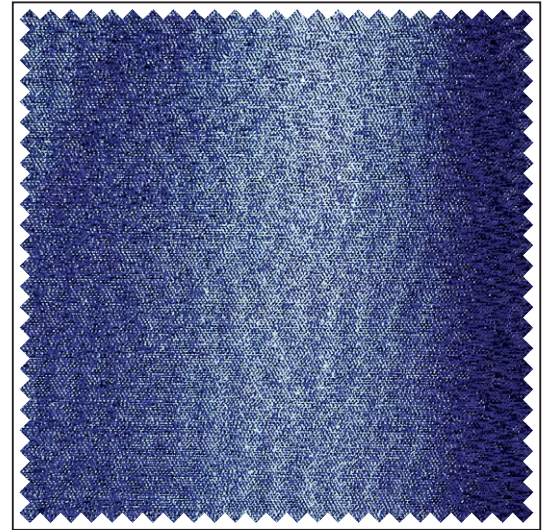
**Toile déco
GRANAT**

75 % polyester, 25 % polyamide.
Longueur des pièces env. 30 ml.

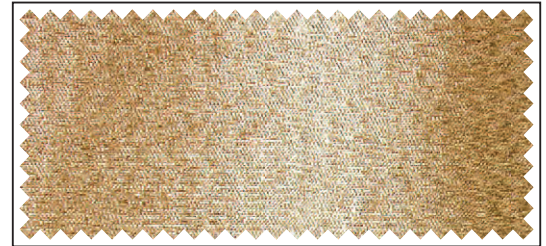
**Special Effect Material
GRANAT**

75 % Polyester, 25 % Polyamide.
Piece lengths approx. 32.8 yds.

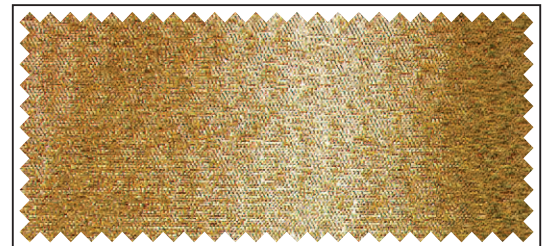
Art. / Réf.	Farben	Coloris	Colours	B1	M1	EN	EN* NFPA	↔ cm	ft/in	g/m ²	oz/yd ²
1822 9431	gelbgold	jaune d'or	yellow gold	•	•	•		160	63"	80	2.36
1822 9471	rotgold	or rouge	pink gold	•	•	•		160	63"	80	2.36
1822 9071	altgold	vieil or	old gold	•	•	•		160	63"	80	2.36
1822 5551	kupferbraun	brun cuivre	copper brown	•	•	•		160	63"	80	2.36
1822 4161	rosa	rose	pink	•	•	•		160	63"	80	2.36
1822 4801	erikaviolett	violet bruyère	heather violet	•	•	•		160	63"	80	2.36
1822 4441	pink	fuchsia	magenta	•	•	•		160	63"	80	2.36
1822 4661	karminrot	rouge carmin	carmine red	•	•	•		160	63"	80	2.36
1822 1621	horizontblau	bleu horizon	horizon blue	•	•	•		160	63"	80	2.36
1822 1681	ultramarinblau	bleu outremer	ultramarine	•	•	•		160	63"	80	2.36
1822 6281	smaragd	vert émeraude	emerald	•	•	•		160	63"	80	2.36
1822 9061	silber	argent	silver	•	•	•		160	63"	80	2.36
1822 9451	platingrau	gris platine	platinum grey	•	•	•		160	63"	80	2.36
1822 9151	eisengrau	gris fer	iron grey	•	•	•		160	63"	80	2.36
1822 3471	tiefschwarz	noir foncé	jet black	•	•	•		160	63"	80	2.36
1823 9431	gelbgold	jaune d'or	yellow gold	•	•	•		310	122"	80	2.36
1823 9471	rotgold	or rouge	pink gold	•	•	•		310	122"	80	2.36
1823 9071	altgold	vieil or	old gold	•	•	•		310	122"	80	2.36
1823 5551	kupferbraun	brun cuivre	copper brown	•	•	•		310	122"	80	2.36
1823 4161	rosa	rose	pink	•	•	•		310	122"	80	2.36
1823 4801	erikaviolett	violet bruyère	heather violet	•	•	•		310	122"	80	2.36
1823 4441	pink	fuchsia	magenta	•	•	•		310	122"	80	2.36
1823 4661	karminrot	rouge carmin	carmine red	•	•	•		310	122"	80	2.36
1823 1621	horizontblau	bleu horizon	horizon blue	•	•	•		310	122"	80	2.36
1823 1681	ultramarinblau	bleu outremer	ultramarine	•	•	•		310	122"	80	2.36
1823 6281	smaragd	vert émeraude	emerald	•	•	•		310	122"	80	2.36
1823 9061	silber	argent	silver	•	•	•		310	122"	80	2.36
1823 9451	platingrau	gris platine	platinum grey	•	•	•		310	122"	80	2.36
1823 9151	eisengrau	gris fer	iron grey	•	•	•		310	122"	80	2.36
1823 3471	tiefschwarz	noir foncé	jet black	•	•	•		310	122"	80	2.36



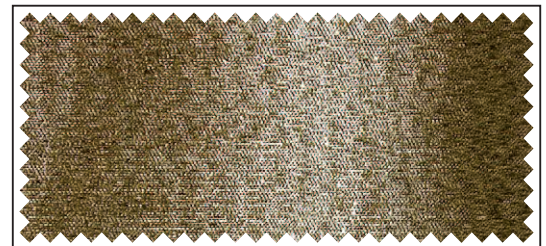
Griffmuster / Echantillon / Sample



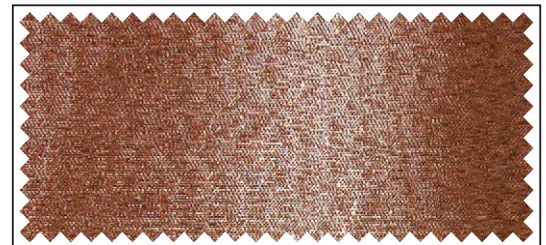
-9431



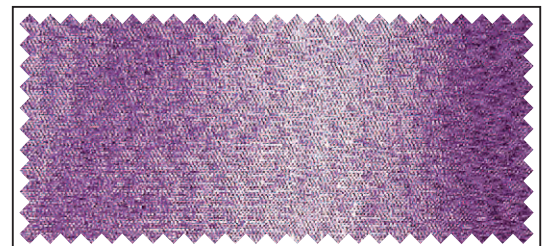
-9471



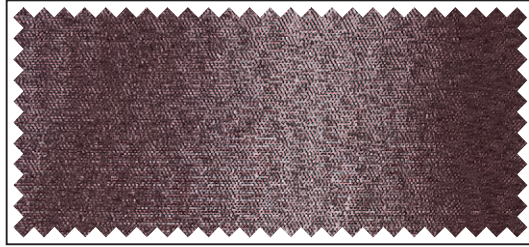
-9071



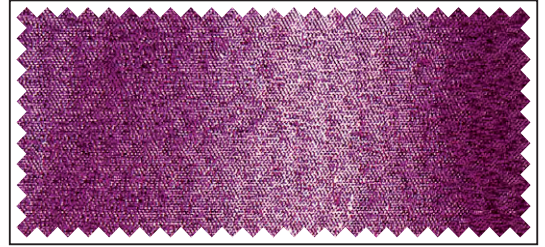
-5551



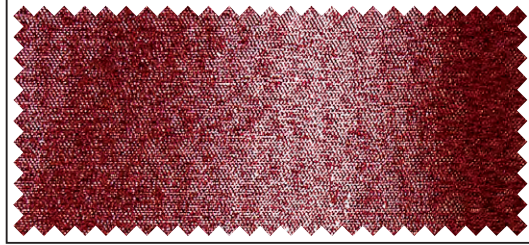
-4161



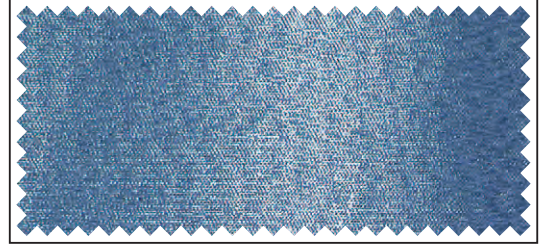
-4801



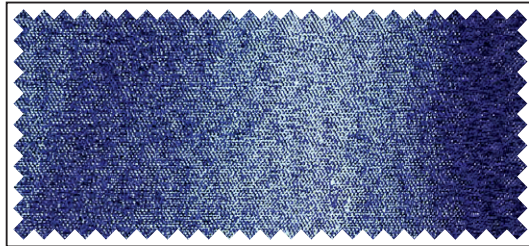
-4441



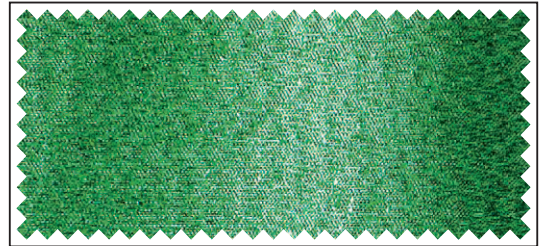
-4661



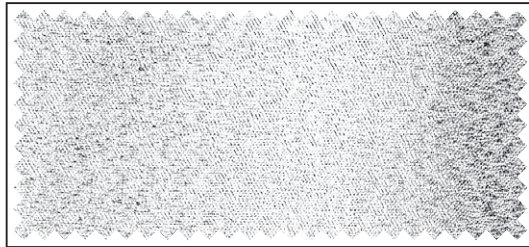
-1621



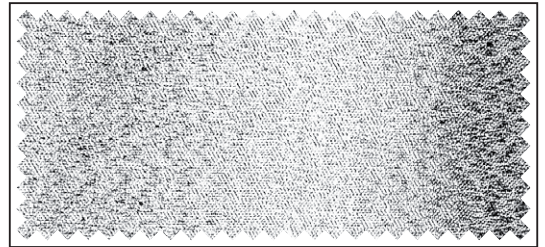
-1681



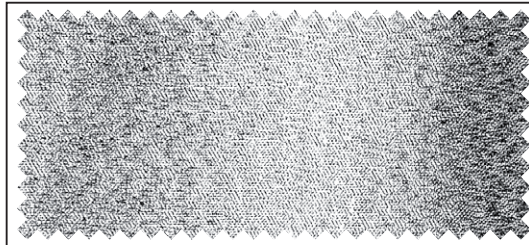
-6281



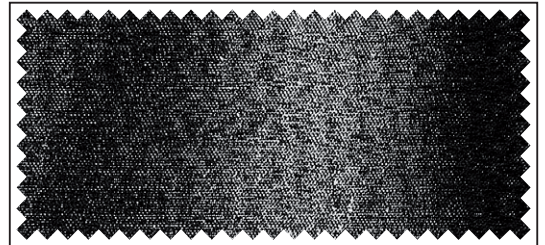
-9061



-9451



-9151



-3471

Gerriets GmbH
Im Kirchenhürstle 5-7
DE-79224 Umkirch
☎ +49 7665 960 0
☎ +49 7665 960 125
info@gerriets.com
www.gerriets.com

Gerriets S. A. R. L.
Rue du Pourquoi Pas
FR-68600 Volgelsheim
☎ +33 3 89 22 70 22
☎ +33 3 89 22 70 50
info@gerriets.fr
www.gerriets.fr

Gerriets International Inc.
130 Winterwood Avenue
US-Ewing NJ 08638
☎ +1 609 771 8111
☎ +1 609 771 8118
info@gerriets.us
www.gerriets.us

Gerriets Great Britain Ltd.
18 Verney Road
GB-London SE16 3DH
☎ +44 20 7639 7704
☎ +44 20 7732 5760
info@gerriets.co.uk
www.gerriets.co.uk

Gerriets Austria CEE GmbH
Gorskistraße 8
AT-1230 Wien
☎ +43 1 6000 600 0
☎ +43 1 6032 585
info@gerriets.at
www.gerriets.at

Gerriets España S. L.
Pol. Ind. Camporosso Sur
Avda. de Las Moreras
Sector 1, Naves 1-2-3
ES-28350 Ciempozuelos, Madrid
☎ +34 91 134 5022
☎ +34 91 134 5084
info@gerriets.es
www.gerriets.es

Gerriets Belgique
Distribué par :
Gerriets S. A. R. L.
Rue du Pourquoi Pas
FR-68600 Volgelsheim
☎ +33 3 89 22 70 22
☎ +33 3 89 22 70 50
info@gerriets.fr
www.gerriets.fr

Gerriets Nederland
LevTec BV
Pieter Braaijweg 51
NL-1114 AJ Amsterdam-Duivendrecht
☎ +31 20 40 82 553
☎ +31 20 40 82 662
info@gerriets.nl
www.gerriets.nl

Gerriets Italia
Risam for show
Viale Spagna 150 / B
IT-20093 Cologno Monzese (MI)
☎ +39 02 2532 113
☎ +39 02 2532 130
info@gerriets.it
www.gerriets.it

Gerriets Hellas
Stage Art EPE
Stournari 27B
GR-10682 Athens
☎ +30 210 3836 715
☎ +30 210 3811 929
info@gerriets.gr
www.gerriets.gr

Gerriets Turkey
Benart Sound-Light-Vision-Stage System
Ibrahim Karaoglanoglu Cad.
Altinok Plaza No:37 K:3
Seyrantepe – Kağıthane
TR-34418 Istanbul
☎ +90 212 254 33 43
☎ +90 212 254 33 53
benart@benart.net
www.benart.net

Gerriets Slovenija
(Croatia, Bosnia and Herzegovina,
Serbia, Montenegro, Macedonia,
Kosovo)
MAORI, d.o.o.
Špruha 14
SI-1236 loc Trzin
☎ +386 143 052 79
☎ +386 590 27 508
info@gerriets.si
www.gerriets.si

Gerriets Hungária
Gépbér Hungária Ltd
Mester u. 87
HU-1095 Budapest
☎ +36 147 665 21
☎ +36 147 665 20
info@gerriets.hu
www.gerriets.hu

Gerriets Romania
Distributed by:
Gerriets Austria CEE GmbH
Gorskistraße 8
AT-1230 Wien
☎ +43 1 6000 600 0
☎ +43 1 6032 585
info@gerriets.at
www.gerriets.at

Gerriets Bulgaria
Landau Impex GmbH
Shavarski pat Str. No. 3
BG-1000 Sofia, Losenetz
☎ +35 92 862 92 44
☎ +35 92 868 71 16
info@gerriets.bg
www.gerriets.bg

Gerriets Korea Co., Ltd.
22-12, Ogab-gil 192beon-gil,
Gamgok-myeon, Eumseong-gun,
Chungcheongbuk-do
Korea 369-852
☎ +82 2 477 7713
☎ +82 2 477 1490
info@gerriets.co.kr
www.gerriets.co.kr

Gerriets South Africa
AVL Distribution
P.O.Box 70740
4, Ealing Crescent
ZA-2021 Bryanston
☎ +27 11 463 5804
☎ +27 11 463 5809
info@gerriets.co.za
www.gerriets.co.za

Gerriets Brasil
Av. do Contorno, 6.413, 2º andar
Savassi
cep 30110-017 Belo Horizonte MG
Brasil
☎ +55 31 9201 4700
info@gerriets.com.br
www.gerriets.com.br

Gerriets Czech Republic / Slovakia
firmy GERRIETS pro CR a SR
Boretická 4
CZ-62800 BRNO
☎ +420 731 064 022
info@gerriets.cz
www.gerriets.cz

